


D11-3P/4P series

Power off the combination switch

OPERATION INSTRUCTION

CNC

Deliver
Power For Better Life

-  Before installing and using this product, please read this manual carefully and pay more attention to safety.

D11-3P/4P series

Power off the combination switch

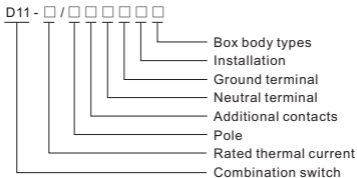
1. General

D11 is the product to introduce foreign advanced technology development with small volume ,most secure and reliable performance. It's a load breaker switch that suitable for ventilation, air conditioning and water pump system, and the industrial equipment switch use for insulation and security isolation, equivalent to foreign KG20-KG100 load breaker switch.

2.Operating conditions

- The ambient air temperature does not exceed +40°C, the average temperature within 24 hours should be not more than +35°C.
- The ambient air temperature is not lower than -5°C.
- Installation site altitude does not exceed 2000m.
- The relative humidity of the air should be no more than 50% when the maximum temperature is +40°C and a lower temperature allows a higher relative humidity, for example, when temperature is 20°C the relative humidity reaches 90%.When occasional condensation occurs due to temperature change, special measures should be taken.

3.Type designation



4.Features

- Security

Insulation distance of the switch contact point is large, to achieve 13-14mm, exceeds the safety requirements VDE0113 in many cases.

- Flexible installation type

Switches can be applied as panel type, you can also apply bottom mount, and the base mounting type can be easily and securely with screws or 35mm rail mounting. Switching system has strong flexibility and adaptability to add additional contacts and neutral terminals, You can not remove the switch that can increase the adaptability of additional contacts easily.

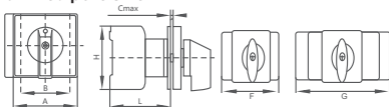
- **Easy installation**

The built-in screw prevents manual slipping and facilitates the best performance of pneumatic or electric tools, ensuring safety and speed of installation.

5. Technical data

Control current and power Use categories Switch model	IEC/BS/VDE Rated standard values					
	Rated thermal current	Resistive load Ac21	Ac23 Accidental switching motors or high inductive loads		Direct link to start the motor	
			3×220~240V	3×380~440V	3×220~240V	3×380~440V
D11-25	25A	25A	4kW	7.5kW	3kW	5.5kW
D11-32	32A	32A	5.5kW	11kW	4kW	7.5kW
D11-40	40A	40A	7.5kW	15kW	7.5kW	11kW
D11-63	63A	63A	11kW	22kW	11kW	12.5kW
D11-80	80A	80A	18.5kW	30kW	15kW	22kW
D11-100	100A	100A	22kW	37kW	18.5kW	30kW

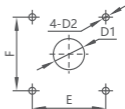
6. Fixed pore size



Switch	Type	Pole	A	B	Cmax	F	G	H	L
D11-25 D11-32	ON-OFF	3P	64	48	4	42	-	54	62
	ON-OFF	4P	64	48	4	56	-	54	62
	ON-OFF	3P+N	64	48	4	56	-	54	62
	ON-OFF	3P+N+E	64	48	4	69	-	54	62
	ON-OFF	6P	64	48	4	-	84	54	62
D11-40 D11-63	ON-OFF	3P	64	48	4	50	-	64	67
	ON-OFF	4P	64	48	4	66	-	64	67
	ON-OFF	3P+N	64	48	4	66	-	64	67
	ON-OFF	3P+N+E	64	48	4	82	-	64	67
	ON-OFF	6P	64	48	4	-	100	64	67
D11-80 D11-100	ON-OFF	3P	64	48	4	70	-	80	82
	ON-OFF	4P	64	48	4	92	-	80	82
	ON-OFF	3P+N+E	64	48	4	104	-	80	82
	ON-OFF	6P	88	68	4	-	140	80	82

Panel Mounting

Model specification	Mounting dimensions(mm)			
	E	F	D1	D2
D11-25	48	48	$\phi 20$	$\phi 4.2$
D11-32	48	48	$\phi 20$	$\phi 4.2$
D11-40	48	48	$\phi 20$	$\phi 4.2$
D11-63	48	48	$\phi 20$	$\phi 4.2$
D11-80	48	48	$\phi 20$	$\phi 4.2$
D11-100	48	48	$\phi 20$	$\phi 4.2$





CERTIFICATE

Product Model: D11-3P/4P series

Inspector: **CNC001**

Production date: Printed on the product
or package.

This product is qualified according
to the delivery inspection

CNC

D11-3P/4P series

CNC ELECTRIC

Tel: 0086-577-61989999 Fax: 0086-577-61891122

www.cncele.com E-mail: cncele@cncele.com