


LE1 series

Magnetic Starter

OPERATION INSTRUCTION

Standard: IEC 60947-4

CNC Deliver
Power For Better Life

-  Before installing and using this product, please read this manual carefully and pay more attention to safety.

1. General

1.1 LE1 Magnetic starter is suitable for using in the circuits the rated voltage up to 690V AC 50Hz or 60Hz. With AC-3 type, LE1 is used for starting or halting of three-phase squirrel case electromotor which rated working voltage is 380V and rated working current is from 9A to 95A. Combining with matchable thermal relay can protect the motor from overload and phase failure.

2. Operation and installation condition

1) Ambient air temperature: $-5^{\circ}\text{C} \sim +40^{\circ}\text{C}$, average temperature of 24 hours must below $+35^{\circ}\text{C}$

2) Altitude: $\leq 2000\text{m}$

3) Relative humidity: The maximum temperature of 40 degrees, the air relative humidity not exceed 50%, at a lower temperature can allow for a higher relative humidity. The humidest month's

average lowest temperature must be below 25°C, the max relative humidity of that month should not exceed 90%.If humidity changes as a result of occasional gel generated,should eliminate it.

4)Pollution level: 3

5)Installation category: III

6)Installation position: The installation degree of the tilt and vertical plane should not exceed $\pm 5^\circ$.

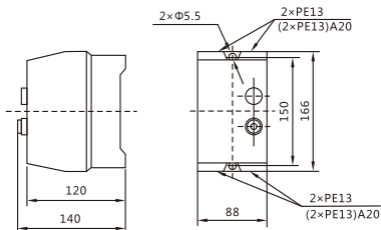
7)Shock vibration:Products should be installed and used without significant shake, shock and vibration place.

3. Specifications

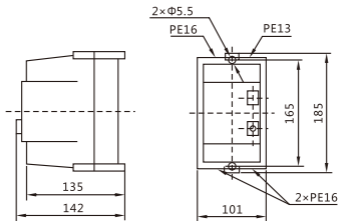
	Maximum power AC3 duty (kW)			Rated current (A)	Matched thermal relay (A)
	220V 230V	380V 400V	660V 690V		
LE1-09	2.2	4	5.5	9	JR28-25/LR2-D13
LE1-12	3	5.5	7.5	12	JR28-25/LR2-D13
LE1-18	4	7.5	10	18	JR28-25/LR2-D13
LE1-25	5.5	11	15	25	JR28-25/LR2-D13

LE1-32	7.5	15	18.5	32	JR28-25/LR2-D13
LE1-40	11	18.5	30	40	JR28-93/LR2-D33
LE1-50	15	22	33	50	JR28-93/LR2-D33
LE1-65	18.5	30	37	65	JR28-93/LR2-D33
LE1-80	22	37	45	80	JR28-93/LR2-D33
LE1-95	25	45	45	95	JR28-93/LR2-D33

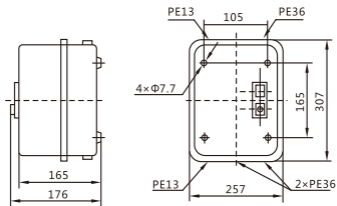
4. Overall and mounting dimensions(mm)



LE1-09, 12, 18



LE1-25, 32



LE1-40, 50, 65, 80, 95



CERTIFICATE

Product Model: LE1

Standard: IEC 60947-4-1

Inspector: **CNC003**

Production date: Printed on the product
or package.

This product is qualified according
to the delivery inspection

CNC

LE1 series

CNC ELECTRIC

Tel: 0086-577-61989999 Fax: 0086-577-61891122

www.cncele.com E-mail: cncele@cncele.com